



MINISTRY OF EDUCATION, SINGAPORE
in collaboration with
CAMBRIDGE INTERNATIONAL EDUCATION
General Certificate of Education Ordinary Level

HIGHER ART

6124/01

Paper 1 Visual Response

For examination from 2026

SPECIMEN INSERT

2 hours 15 minutes

READ THESE INSTRUCTIONS FIRST

This Insert contains Figure 1.1 for Question 1.

Figure 2.1 is a set of images for reference when developing the Exploratory Sketching for Question 2.



This document consists of **4** printed pages.



Singapore Examinations and Assessment Board



CAMBRIDGE
International Education

Figure 1.1 for Question 1

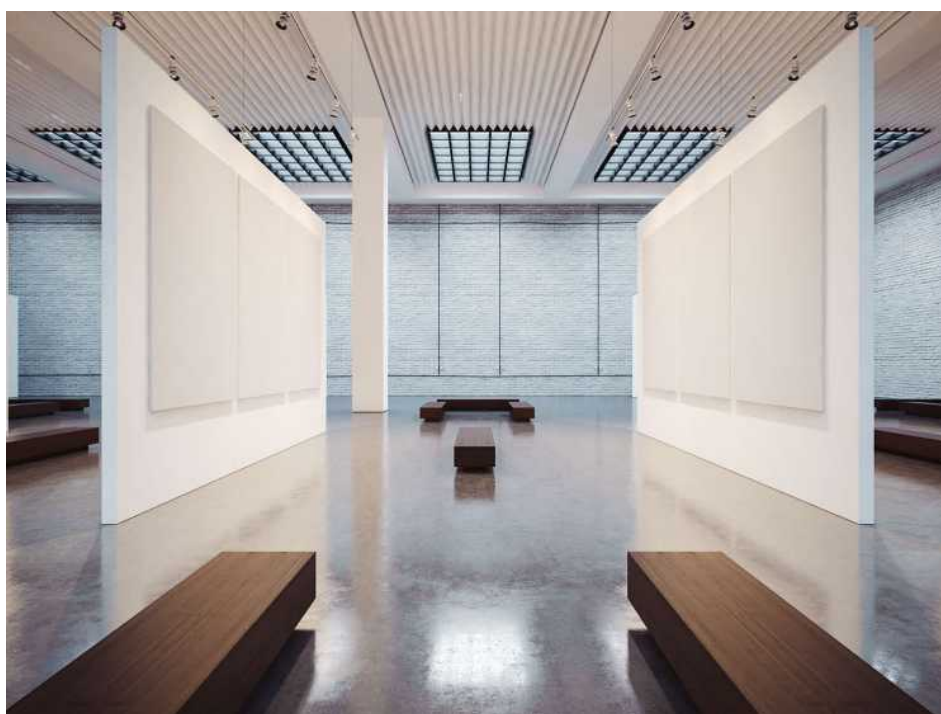


Claes Oldenburg, *Shoestring Potatoes Spilling from a Bag* 1966
Canvas, kapok, glue, acrylic, 274 × 117 × 107 cm variable

Figure 2.1 for Question 2

You may choose to refer to the set of images below as reference materials for Question 2.





Copyright Acknowledgements:

- Figure 1.1 © Claes Oldenburg and Coosje van Bruggen; *Shoestring Potatoes Spilling from a Bag*; canvas, kapok, glue, acrylic; 274 × 117 × 107 cm variable; 1966; Walker Art Center, Minneapolis.
- Figure 2.1 © Ref: WCKPAN; Olesea Vetrila / Alamy Stock Photo; *Overflow bin with rubbish after festival. Food package, empty plastic bottles, and other single use plastic elements*; www.alamy.com
- Figure 2.1 © Ref: CXD9Y0; FALKENSTEINFOTO / Alamy Stock Photo; *Dropped Cone*, by the pop-art artist Claes Oldenburg, ice cone sculpture, roof of the Neumarkt Galerie, Cologne, Germany, Europe; www.alamy.com
- Figure 2.1 © Ref: 2FN31B4; Daisy-Daisy / Alamy Stock Photo; *Sustainable recyclable takeaway food packaging*; www.alamy.com
- Figure 2.1 © Ref: KE363Y; Aflo / Alamy Stock Photo; *Japanese elementary school kid eating in the classroom*; www.alamy.com
- Figure 2.1 © Ref: 2R0HDMC; Jennifer Barrow / Alamy Stock Photo; *Junk food table scene*; www.alamy.com
- Figure 2.1 © Ref: 2J6R035; Csilla Muth / Alamy Stock Photo; *Former Philips gas station, diner on Route 66*; www.alamy.com
- Figure 2.1 © Ref: 533808398; Sfiro Cracho / gettyimages; *Empty contemporary interior of gallery*; www.gettyimages.co.uk

Permission to reproduce items where third-party owned material protected by copyright is included has been sought and cleared where possible. Every reasonable effort has been made by the publisher (Cambridge University Press & Assessment) to trace copyright holders, but if any items requiring clearance have unwittingly been included, the publisher will be pleased to make amends at the earliest possible opportunity.

Cambridge International Education is the name of our awarding body and a part of Cambridge University Press & Assessment, which is a department of the University of Cambridge.